

Millimess Maxµm III

Display Unit

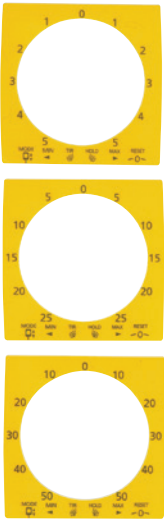


FUNCTIONS

- RESET (set display to zero)
- mm/inch
- Reversal of counting direction
- RANGE (switch the measuring range and resolution)
- ABS (reference to the electrical zero point)
- TOL (enter tolerance limit values)
- MAX/MIN memory for searching the reversal point
- TIR (MAX-MIN) for testing flatness and concentricity
- HOLD (storage of measured values)

FEATURES

- Large, high contrast digital, analog and fan display for better readability while testing flatness and concentricity as well as for searching the reversal point in bores
- Interchangeable dials
- Inductive absolute measuring system
- Metal cast housing with robust buttons
- SoftwareMarCom Professional free download: www.mahr.com/marcom (only for Mahr data cables and wireless systems with USB and RS232 interface)
- **Data interface:** none
- **Energy supply:** Battery operation, Battery life approx. 4000 hrs.
- **Package contains:** interchangeable dials, battery, instruction manual



TECHNICAL DATA

Order no.	2033001		2033011	2033021
Product type		Maxµm III		
Measuring range	mm	Depending on probe type		
Standard		Factory standard		
Measuring force	N	-		
Data output Maxµm		without data ouput	Data output 6-pin (D, E1)	Data output 10 pin (E2)
IP protection category:		IP 54		

ACCESSORIES

Order no.	Product name	Product type
2239138	Battery for Maxµm III Type CR 123A	
2212877	Dust cover	ECV-1307-W1
2239040	Set of 3 inch and 3 metric scale overlay	
2217907	Spare screws for back panels	ESW-1252
2240545	Maxµm III, unlock setup & unlock calibration key, (D, E1)	
2239035	Digimatic data cable (2 m) (D, E1)	
2239036	Data cable RS232C (2 m) (D, E1)	
2240547	Maxµm III, unlock setup & unlock calibration key (E2)	
2239037	Digimatic data cable (2 m) (E2)	
2239038	Data connection cable RS232C (2 m) (E2)	
2121428	USB data cable (2 m) (E1)	

Millimes Maxµm III

Digital Probe

FEATURES

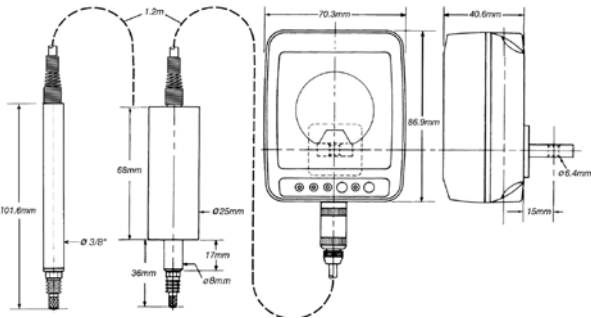
- Maxum transducers are available as replacement parts - refer to part price list for part numbers and pricing
- Maxum III remote indicating units are sold without digital transducer
- Any digital transducer may be used with a Maxum III remote indicating unit
- For alternate cable lengths, extension cables or special indicator options - call Mahr's Technical Assistance Group
- SoftwareMarCom Professional free download: www.mahr.com/marcom (only for Mahr data cables and wireless systems with USB and RS232 interface)



TECHNICAL DATA

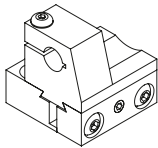
Order no.		2033091	2033093	2033095	2033097	2033092	2033094	2033096	2033098
Product type		Maxµm III							
Measuring range	mm	± 1,00				± 1,99			
Measuring range	inch	± .040"				± .100"			
Partial measuring range	mm	± 0.199							
Partial measuring range	inch	± .199							
Resolution	mm	0.0005, 0.001, 0.005				0.001, 0.005			
Resolution	inch	.00002", .00005", .0001", .0005"				.0001", .0005"			
Error limit	µm	± 10				± 14			
Error limit	inch	± .0004"				± .0007"			
Error limit in partial measuring range	µm	± 1							
Error limit in partial measuring range	inch	± .0001"							
Standard		Factory standard							
Measuring force	N	0.8 – 1.1							

Order no.	a	a	Mounting shaft	Mounting shaft
	inch	mm	mm	inch
2033091	.670"	17		.375"
2033093	1.50"	38		.375"
2033095	.670"	17	8	
2033097	1.50"	38	8	
2033092	.670"	17		.375"
2033094	1.50"	38		.375"
2033096	.670"	17	8	
2033098	1.50"	38	8	



ACCESSORIES

Order no.	Product type
2201628	AAD-91
2208615	EAD-1007-W1
2208616	EAD-1007-W2
2236895	



EAD-1007-W1;
EAD-1007-W2

Millimess Maxµm III

Digital Probe

FEATURES

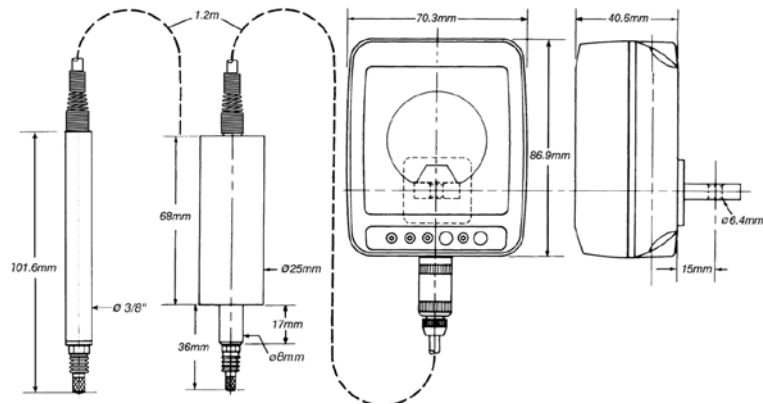
- Maxum transducers are available as replacement parts - refer to part price list for part numbers and pricing
- Maxum III remote indicating units are sold without digital transducer
- Any digital transducer may be used with a Maxum III remote indicating unit
- For alternate cable lengths, extension cables or special indicator options - call Mahr's Technical Assistance Group
- SoftwareMarCom Professional free download: www.mahr.com/marcom (only for Mahr data cables and wireless systems with USB and RS232 interface)



TECHNICAL DATA

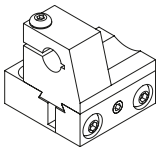
Order no.		2033099
Product type		Maxµm III
Measuring range	mm	± 1,00
Measuring range	inch	± .040"
Partial measuring range	mm	± 0.199
Partial measuring range	inch	± .199
Resolution	mm	0.0005, 0.001, 0.005
Resolution	inch	.00002", .00005", .0001", .0005"
Error limit	µm	± 10
Error limit	inch	± .0004"
Error limit in partial measuring range	µm	± 1
Error limit in partial measuring range	inch	± .0001"
Standard		Factory standard
Measuring force	N	0.8 –1.1

Order no.	a	a	Mounting shaft
	inch	mm	inch
2033099	3.25"	82.5	.375"



ACCESSORIES

Order no.	Product type
2201628	AAD-91
2208615	EAD-1007-W1
2208616	EAD-1007-W2
2236895	



EAD-1007-W1;
EAD-1007-W2